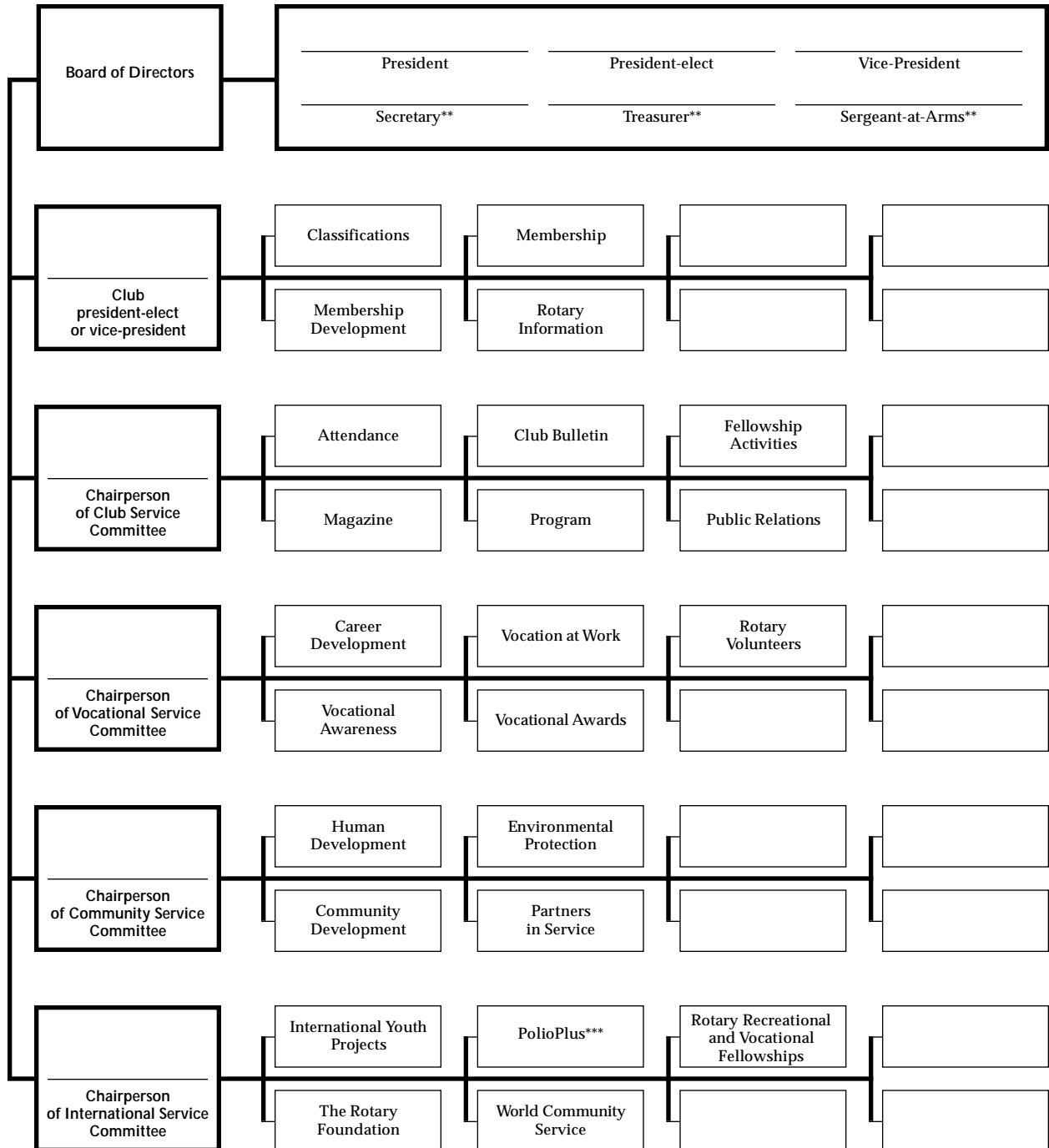


Committee Plan for a Rotary Club

Adapt this committee pattern to the size and needs of your club*



* In a club of under 30 members it may be necessary to combine committees. For example, the Magazine committee could be combined with the Club Bulletin committee, or the Membership and Membership Development committees might be combined.

** Any or all of these may or may not be members of the board as provided by the bylaws of the club.

*** May be included under the Community Service committee, if preferred.